

**BL
99**

BL-99 EDITION

GP2-QPA-01

PREAMP

FOUR CHANNEL

Version 4.5 December 2012- English

SAFETY RELATED SYMBOLS



This symbol, wherever used, alerts you to the presence of un-insulated and dangerous voltages within the product enclosure. These are voltages that may be sufficient to constitute the risk of electric shock or death.



This symbol, wherever used, alerts you to important operating and maintenance instructions. Please read.



Protective Ground Terminal



AC mains (Alternating Current)



Hazardous Live Terminal

ON: Denotes the product is turned on.

OFF: Denotes the product is turned off.

WARNING

Describes precautions that should be observed to prevent the possibility of death or injury to the user.

CAUTION

Describes precautions that should be observed to prevent damage to the product.

WARNING: TO REDUCE THE RISK OF FIRE OR ELECTRIC SHOCK DO NOT EXPOSE THIS EQUIPMENT TO RAIN OR MOISTURE



Disposing of this product should not be placed in municipal waste and should be Separate collection.

CONTENTS

1. IMPORTANT SAFETY INSTRUCTIONS

2. INTRODUCTION

3. INSTALLATION

- a. AC MAINS SUPPLY
- b. AUDIO OPERATION LEVEL
- c. MICROPHONE INPUTS
- d. INSTRUMENT INPUTS
- e. BALANCED OUTPUTS
- f. VENTILATION
- g. REAR PANEL
- h. MOUNTING RACK

4. OPERATION

- a. FRONT PANEL
- b. MICROPHONE INPUTS
- c. 20DB PAD SWITCH
- d. PHANTOM POWER
- e. INPUT GAIN
- f. DRIVE AND PEAK LAMPS
- g. PHASE REVERSE

5. BLOCK DIAGRAM

6. GETTING STARTED

7. SPECIFICATIONS

8. WARRANTY

1. IMPORTANT SAFETY INSTRUCTIONS

1. Read all these instructions.
2. Keep these instructions.
3. Heed all warnings.
4. Follow all instructions.
5. Do not use this apparatus near water.
6. Clean only with dry cloth.
7. Do not block ventilation openings, install in accordance with manufacturer's instructions.
8. Do not install near any heat sources such as radiators heat registers, stoves, or other apparatus (including amplifiers) that produce heat.
9. Do not defeat the safety purpose of the polarized grounding type plug. A polarized plug has two blades with one wider than the other. A grounding type plug has two blades and a third grounding prong. The wide blade or third prong is provided for your safety. If the provided plug does not fit into your outlet, consult an electrician for replacement of the obsolete outlet.
10. Protect the power cord from being walked on or pinched particularly at the plugs, convenience receptacles, and at the point where they exit from the apparatus.
11. Only use attachments/accessories specified by the Manufacturer.
12. Unplug the apparatus during lightning storms or when unused for long periods of time.
13. Refer all servicing to qualified service personnel. Servicing is required when the apparatus has been damaged in any way, such as power supply plug has been damaged. Liquid has been spilled or objects have fallen into the apparatus, the apparatus has been exposed to rain or moisture, does not operate normally, or has been dropped.



Warning: To Reduce the Risk of Fire or Electric Shock, Do Not Expose This Apparatus to Rain or Moisture



2. INTRODUCTION

Congratulations on purchasing the GP2-QPA-01 4-channel Preamp by Gp2 Inc.

The GP2 Pre-amp is designed with the knowledgeable user in mind.

It picks up where the standard pre-amp leaves off.

Basically, hiss free and harmonic distortion almost too low to measure.

The sound is very robust and holds up under wild equalization.

No mid range fog or harshness, as with other pre-amps.

The entire mid-range is well defined and allows for a whole new experience in the studio.

The top end is smooth with 'air' but no roughness

Extends easily beyond hearing range. (No bumping at around 8k or lack of air)

Headroom is exceptional

Almost impossible to get distortion.

For the user who doesn't want the classic English 'processed' sound or the American 'harshness'

3. INSTALLATION

AC MAINS SUPPLY



The unit is fitted with an internationally approved 3 pin IEC connector. Earth connection must be used.

Before connecting the unit to the supply check that the unit is set for the correct mains voltage. The unit is externally set for 115V 60Hz or 230V 50 Hz operations ,by removing the fuse drawer and removing the voltage selector jumper, reinstall the jumper with the desired 115V or 230V showing through the window in the fuse drawer ,once it is installed. All mains wiring should be performed with all power switched off.

The mains fuse required is 20mm anti-surge, 1A rated at 250V. If it is ever necessary to replace the fuse only the same type and rating must be used. The power consumption of the equipment is 20VA.



The appliance coupler is used as main disconnect device.

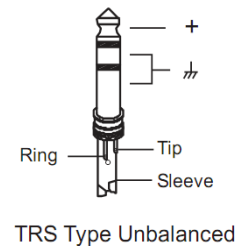
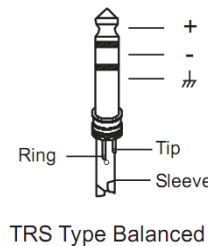
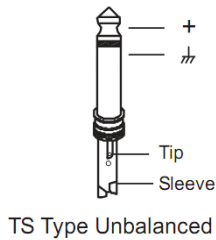


Warning: Attempting to operate on the wrong voltage setting or with an incorrect fuse will invalidate the warranty.

Instrument and Microphone Instrument Combo Jack Inputs

Each channel has a Stereo 0.025" jack connector on the front panel suitable for low level instruments such as guitars, and keyboards. The impedance of this input is 1M ohm making it suitable for a wide range of instruments.

- For 1/4" Phone jack

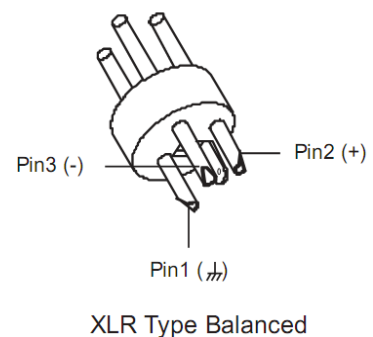
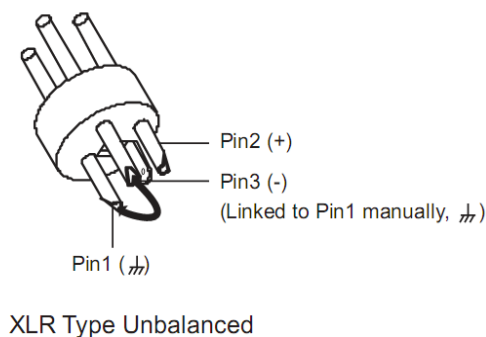


Each channel has a female, 3 pin XLR connector, suitable for balanced low impedance (150 to 600 ohm) microphones. The BL99 also has an additional XLR connector at the rear of the chassis wired in parallel for ease of connection. (Only one XLR input connection can be used per channel at once).

The mating connector should be wired as follows:

- Pin 1 = Ground Pin
- 2 = Signal Phase (hot) Pin
- 3 = Signal Non-Phase (cold)

- For XLR connector



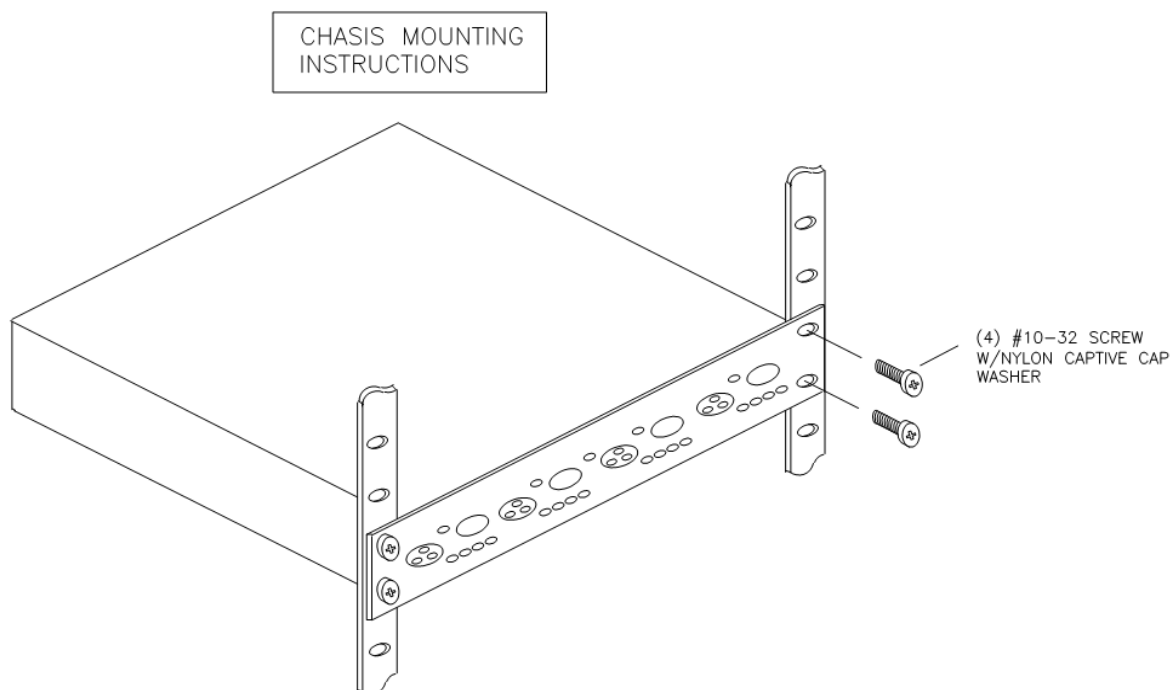
Balanced Outputs

The output is via a balanced 3 pin male XLR connector. The mating connector should be wired same as above.

Ventilation

The unit generates a small amount of heat internally. This heat should be allowed to dissipate by convection through the grills in the side panels. This must not be obstructed. Do not locate near any external heating sources. If used free standing ensure that the equipment is protected against rain and other liquid. The BL99 is designed for free standing or rack mounting.

Rack mounting



4. OPERATION

Front Panel

The front panel controls are identified in Section 6. Each of the four sections is identical.



When connecting instruments or microphones, always have the output gain set to the min position i.e. Fully anticlockwise to avoid sudden “thumps” that could damage speakers.

Microphone Inputs



The 4 XLR microphone inputs are at the rear of the BL99. Virtually any low impedance professional microphone can be used. Condenser microphones will require the 48V phantom power to be engaged for correct operation, but before using Dynamic and Ribbon microphones ensure that the phantom is off.

There are also 4 microphone inputs at the front of the BL99. Connecting a Microphone to this combo input will require pushing the Line/Mic. Switch out to enable the microphone input on that particular channel. The Line/Mic switch will not be illuminated to indicate Mic function is selected.

20dB Pad switch

Occasionally when using sensitive condenser microphones the source signal may be too large for the input preamp. In this situation to avoid any overloading or distortion of the microphone preamp stage the 20dB pad can be used to reduce the input gain to a more manageable level. The 20dB pad only applies to the microphone input.

Enabling the pad will require pushing the PAD Switch in to enable the 20 db pad on that particular channel. The PAD Switch will illuminate to indicate PAD is selected



Phantom Power

Phantom power may be applied to the microphone socket by depressing the + 48V switch. Do not attempt to connect any microphone that does not require phantom power, or any other equipment to an input socket that has phantom power switched on as damage may result.

- XLR Connector Wiring For Phantom Power

PIN1 GND
PIN 2 +48v
PIN 3 +48v

Selecting Phantom Power to this input will require pushing the +48V Switch in to enable Phantom power on that particular channel. +48V Switch will illuminate to indicate Phantom Power is selected.

CAUTION: Never switch phantom power on or off or plug /unplug A microphone with phantom power applied unless the output level Control is turned down. Failure to do so may result in a thump in your monitor or loudspeakers or PA system.

Input Gain

The gain of the preamp stage is variable from +11 to 26. This is a very wide range to cater for all types of microphone and recording situations, but care must be taken not to apply large sudden changes in gain which may result in unexpectedly large output signals. It is quite normal to have to apply larger amounts of gain for less sensitive microphones, such as dynamic types and similarly apply much less input gain for high output condenser microphones.

Drive and Peak Lamps

The white lamp provides a visual indication of the signal level. The drive lamp will gradually illuminate as the input level or gain is increased over the range.



Phase Reverse

The phase reverse switch allows correction of a phase error, which may have occurred in microphone wiring or placement. Phase errors can be due to two microphones picking up the same signal at the same time. If an error is suspected it is a simple operation to check by phase reversing each channel in turn.

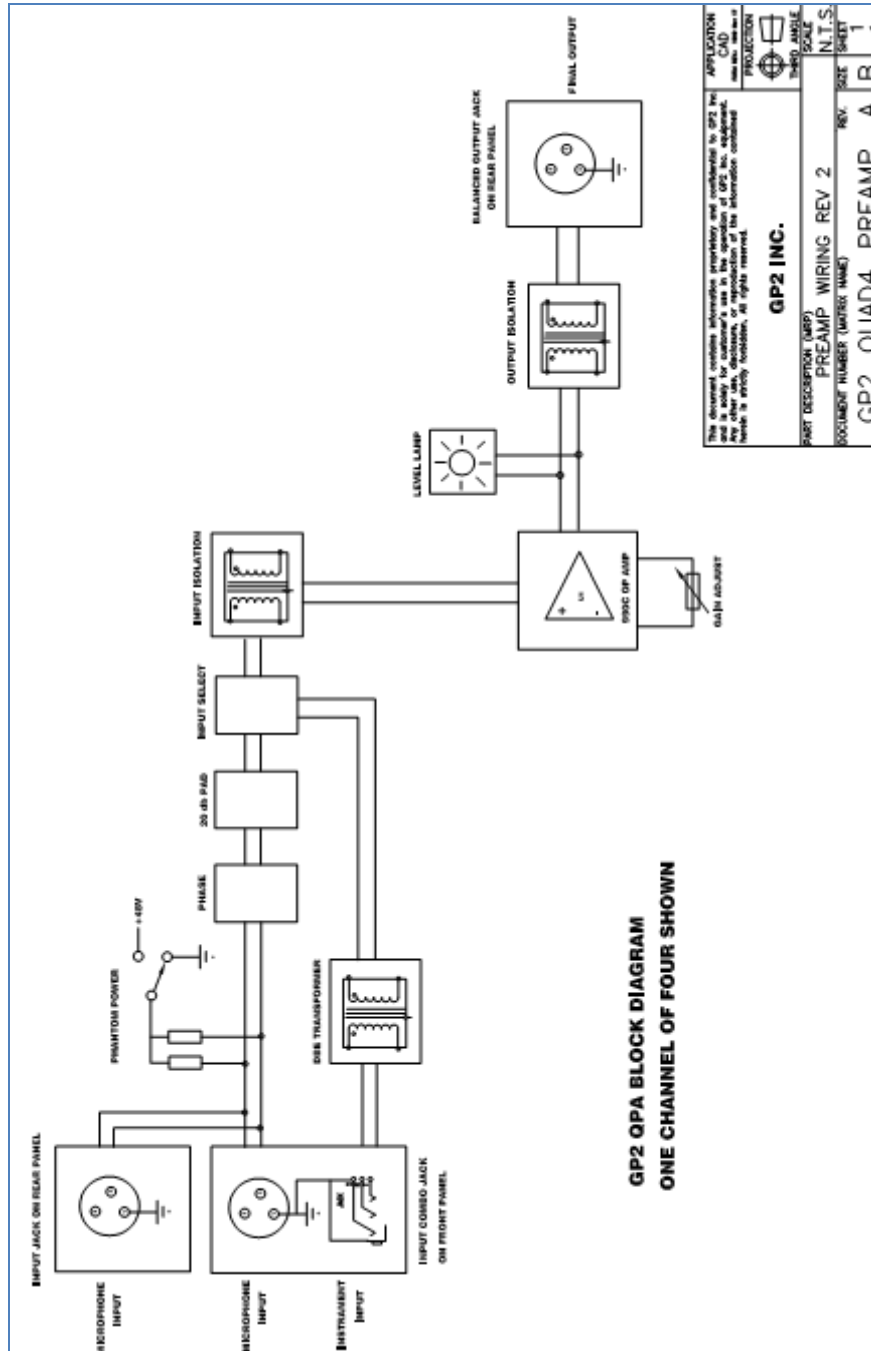
Instrument Input

On each channel there is a front panel combination XLR and 0.25" instrument jack connector. This is for connecting low level instruments such as electric guitars, The instrument input eliminates the need for an external DI box since the high impedance instrument input will convert the signal to a high quality balanced or unbalanced output .

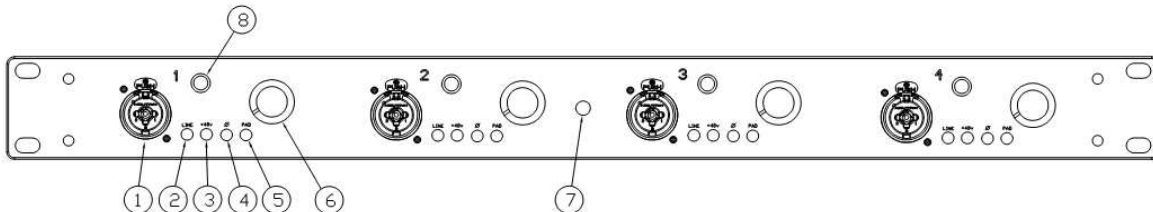
Connecting an instrument to this input will require pushing the Line/Mic. Switch in to disable the microphone input on that particular channel. The Line/Mic. Switch will illuminate to indicate Line is selected.

When using the line input function, the Phantom power, Phase and Pad switches will have no effect on the channel switched for Line use. These switches effect the Microphone selection only.

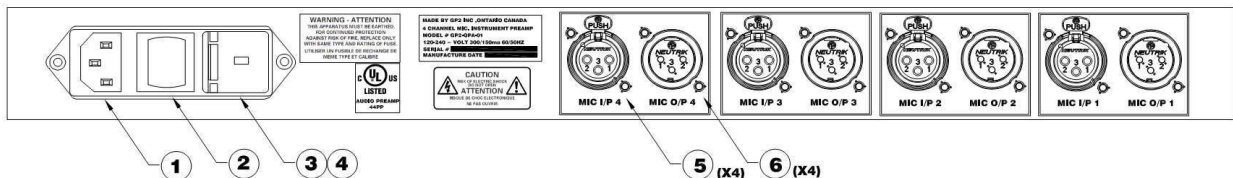
5. BLOCK DIAGRAM



6. GETTING STARTED



- 1) Combination Microphone/Instrument Front Panel Input.
- 2) Microphone/Line Select Switch. Out for Microphone Input in (Illuminated) for line in.
- 3) Phantom Power (48V) Select Switch. Out For No Phantom Power in (Illuminated) For 48V.
- 4) Phase reverse Select Switch. Out for No Reverse In (Illuminated) For Reverse.
- 5) Pad Select Switch. Out For No Pad in (Illuminated) For -20 DB Pad.
- 6) Gain Control Knob Clockwise for more Gain
- 7) Power Indicator Illuminated When Power Is On.
- 8) Level Indicator.



- 9) AC Main Input.
- 10) On / Off Switch
- 11) Fuse Drawer (Replace fuse only with the same Type And Rating)
- 12) Voltage Switch Jumper With Indicator (115/230V)
- 13) Rear Panel Microphone Input
- 14) Rear Panel Microphone Output



7. SPECIFICATIONS

Highlights:

- JT-11 DM Input Transformer per Channel.
- JT-110 K output Transformer per Channel.
- JT-DB-E DIRECT INPUT Transformer per Channel. (When Line Selected)
- Contains one 990 Discrete Op-Amps per Channel. Faster, quieter, more powerful and better sounding than typical monolithic op-amps.

Standard Features:

- 20 position detent Gain Control.
- 20dB PAD switch for XLR Microphone inputs.
- Line Microphone select switch.
- Polarity Reverse switch for XLR Microphone inputs.
- Phantom Power switch for XLR Microphone inputs.
- All (16) Front Panel Switches Are LED Illuminated.
- Gold Plated Connectors throughout entire circuit for maximum reliability.
- Incandescent lamp, for monitoring preamp output.
- Thermally protected Toroidal Power Transformer with Additional Shielding. Eliminates hum problems so no external power supply is needed.
- Power Input Module Allows Voltage Selection and Provides AC Line Filter.

Phantom Power

Voltage +48 VDC Current (maximum) 9.5 mA

Power Requirements,

4 Channels +15% 120, 240 VAC

120-240 ~ VOLT

300-150mA 60/50HZ

Dimensions: 1.75H x 19W x 14D Inches
(Suitable for rack mounting)

8. Warranty Card

The GP2QPA Pre-amp is supported by a lifetime warranty for faults or defective Materials or workmanship during production.

Simply return your GP2QPA Pre-amp to the manufacturer following the instructions On the website. WWWgp2inc.com

Your GP2QPA will be inspected and if found to qualify for the warranty will be replaced Or repaired with shipping costs refunded.

The warranty excludes damage caused by deliberate or accidental misuse, operation on the incorrect mains voltage or without the correct type and value of fuse fitted. It is the user's responsibility to ensure Fitness for purpose in any particular application. The warranty is limited to repair or replacement.

Warranty will be void if the unit has been opened. All units are serialized and must have the tag intact on the machine.

For all other repairs a cost estimate will be supplied before the repair is completed.

FOR YOUR REFERENCE

MODEL # _____

SERIAL # _____

DATE OF PURCHASE _____

DELIVERY _____

Signature _____